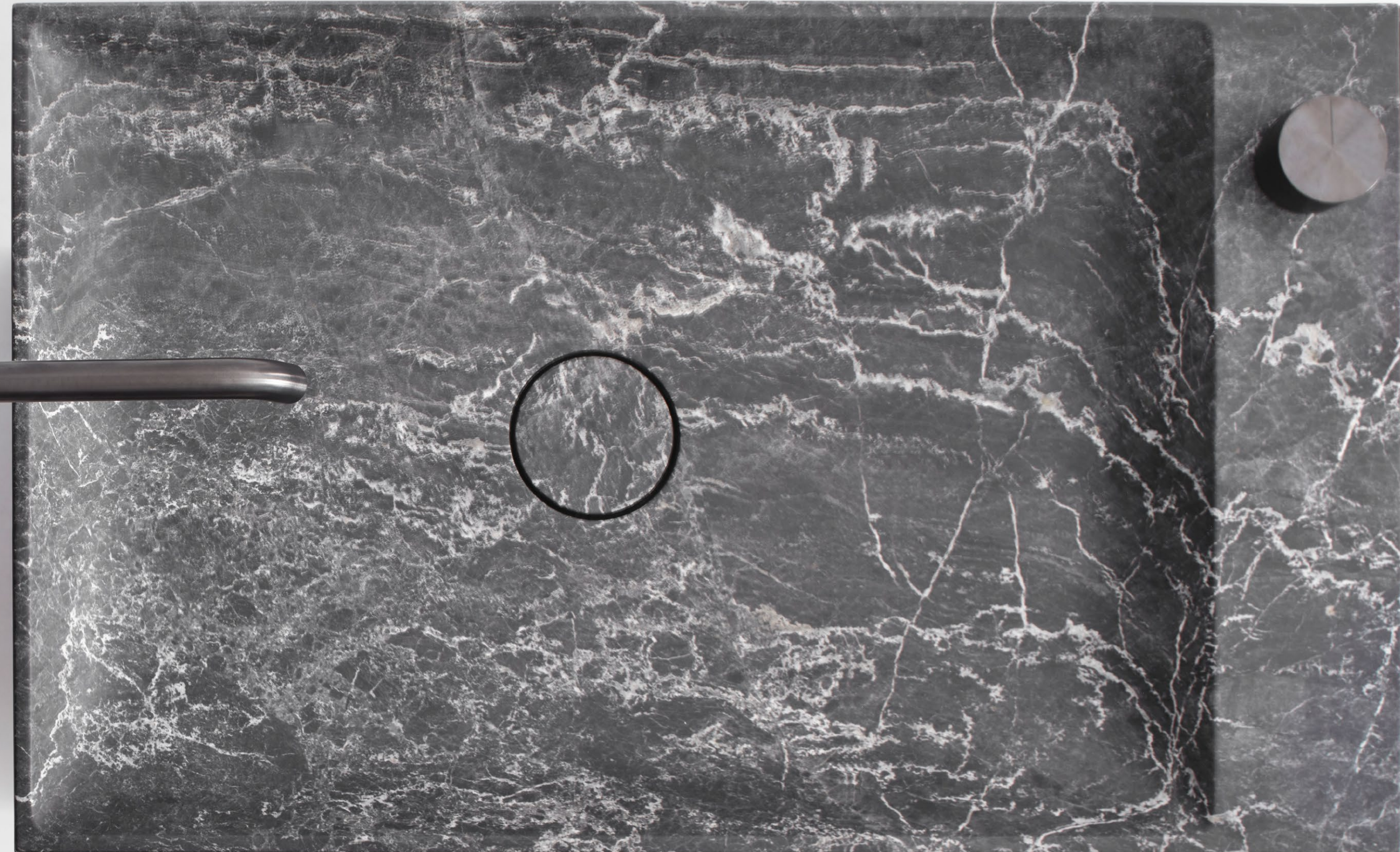


FALPER ID PORTFOLIO 2023

MA
design Foster + Partners



falper.

Identity and prestige. Join the Falper “Club”

See how much beauty, identity, and prestige can be showcased, even within a single space. Becoming a Falper dealer means becoming brand ambassadors in the target market. Join our ‘club’: our dealers can rely on a sophisticated image and established know-how that elevates their positioning with their customers.



Innovative aesthetic code: the total look of the “Living Bathroom”

The aesthetic code of Falper products represents a valuable tool for our dealers, a distinctive advantage compared to competing entities. Our retailers are at the heart of the request management system for customers and architects. In addition to furniture and furnishings, the Falper catalog includes a wide range of accessories to provide a comprehensive, innovative, and cohesive range for the bathroom environment.



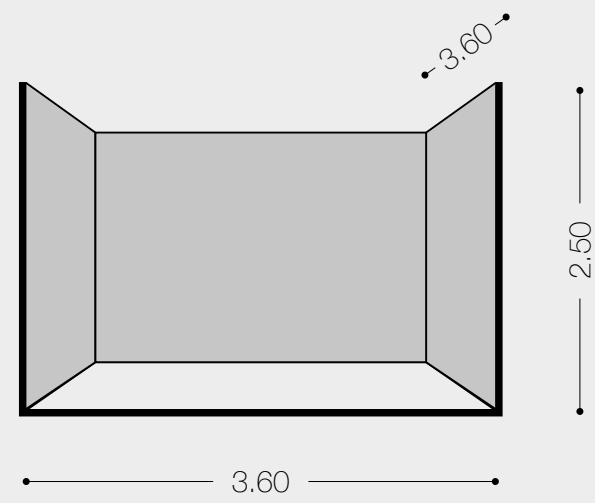
FALPER ID

Four different types that adapt to your space

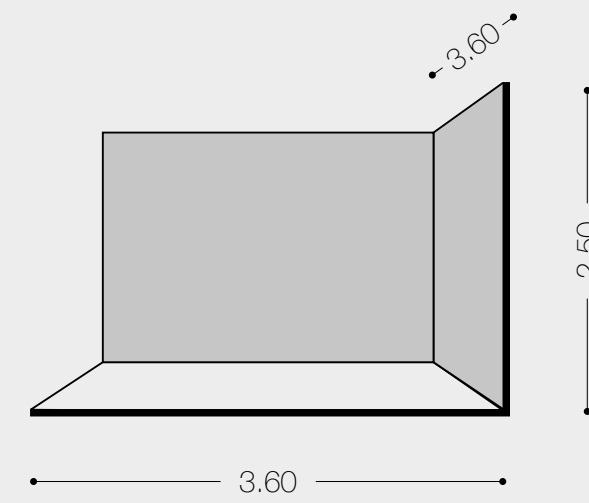
Height: ideal 2.50, minimum 2.30, maximum 3.00 / Length and Depth: ideal 3.60, minimum 3.40, maximum 4.00

The represented ID boxes can be created as long as the specified dimensions are adhered to. In the case of dimensions larger than those indicated, please request a custom project. However, it will not be possible to create ID spaces below the minimum dimensions specified.

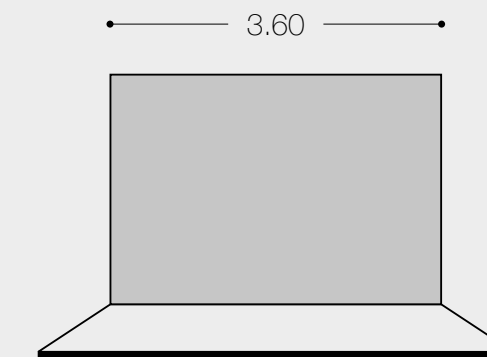
Box



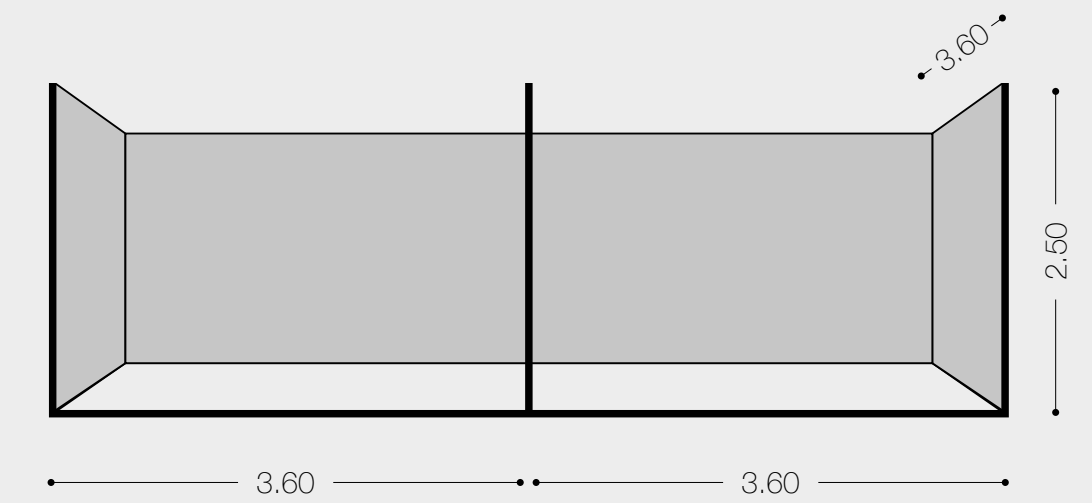
Corner



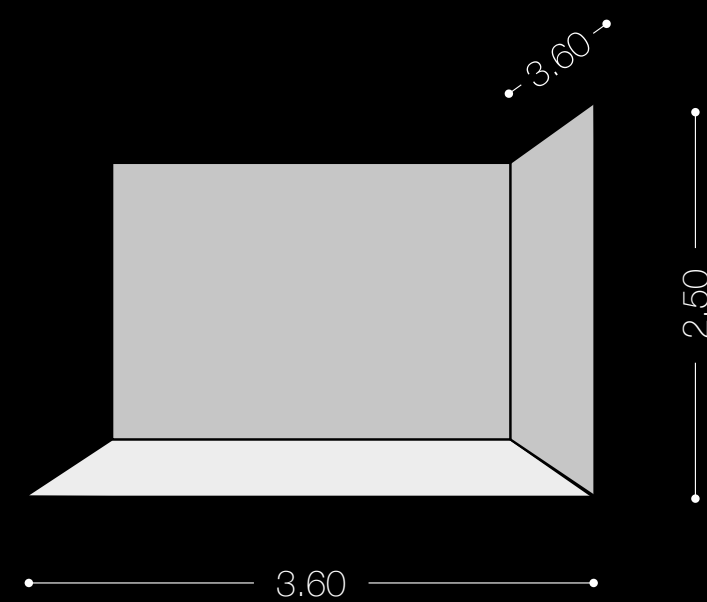
Open Space



Box Doppio



CORNER



#C200

#C201

#C202

#C203

#C204

#C205

#C206

#C207

#C208

#C209

MA wall

design Foster + Partners





CORNER

#C200



CORNER

#C201



CORNER

#C202



CORNER

#C203



CORNER

#C204



CORNER

#C205

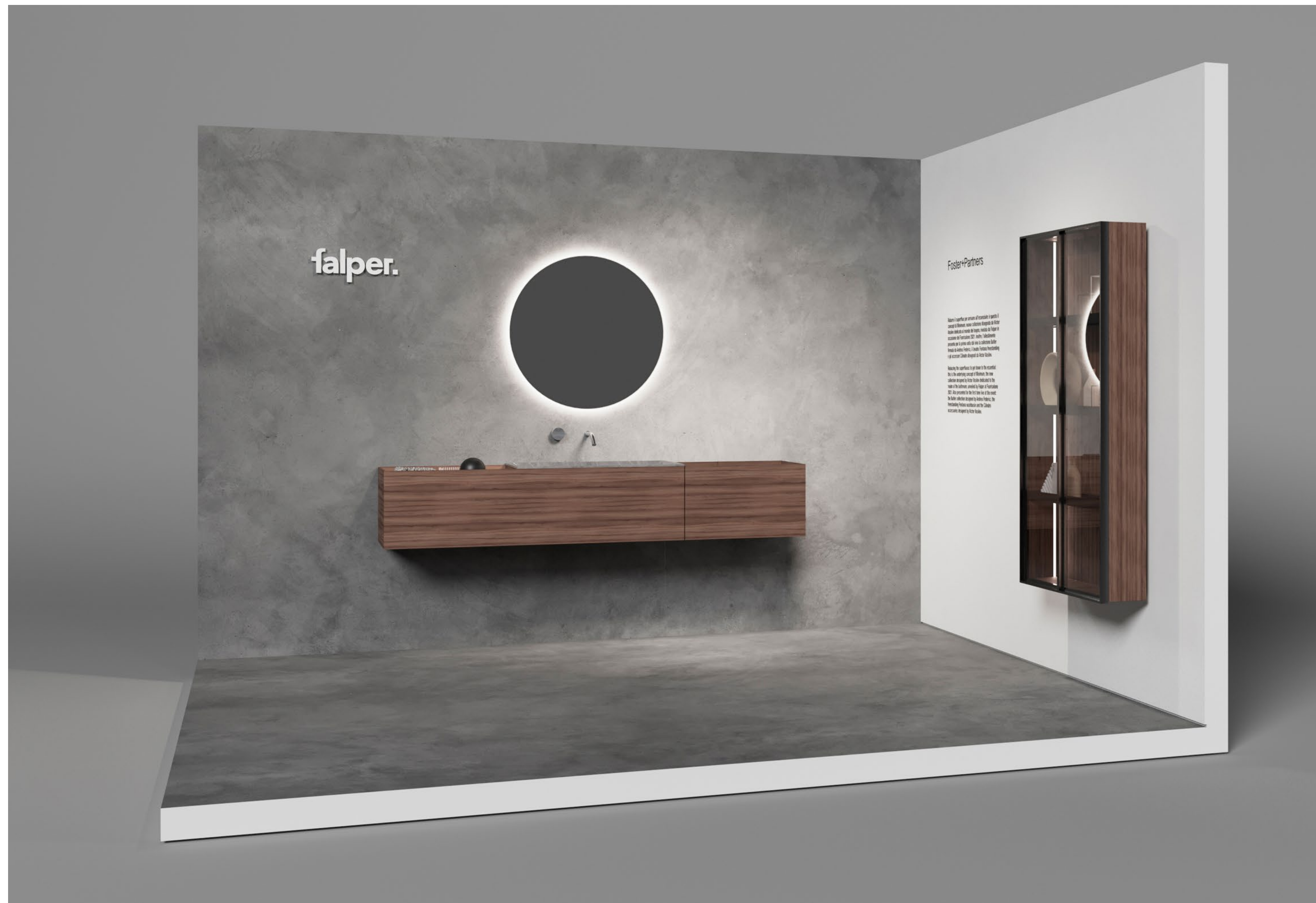
CORNER

#C206



CORNER

#C207



MA island

design Foster + Partners



CORNER

#C208

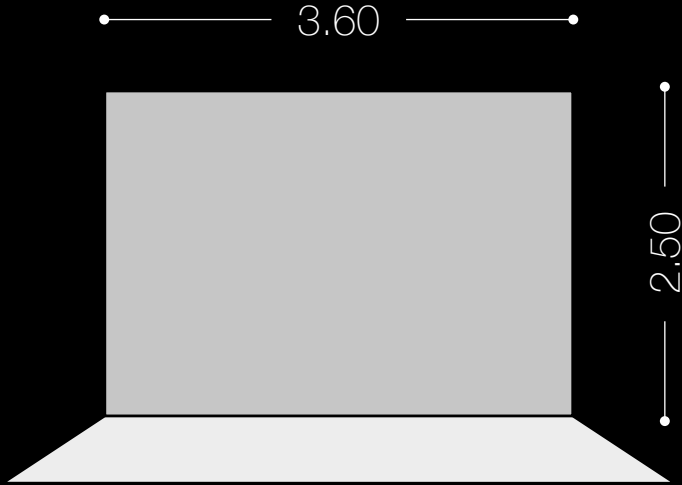


CORNER

#C209



OPEN SPACE



#S200

#S201

#S202

#S203

#S204

OPEN SPACE

#S200



falper

Foster+Partners

Ridurre il superfluo per arrivare all'essenziale: è questo il concept di Minimum, nuova collezione disegnata da Victor Vasilev dedicata al mondo del bagno, rivelata da Falper in occasione del Fuorisalone 2021. Inoltre, l'allestimento presenta per la prima volta dal vivo la collezione Butler firmata da Andrea Federici, il lavabo Fontana freestanding e gli accessori Cilindro disegnati da Victor Vasilev.

Reducing the superfluous to get down to the essential: this is the underlying concept of Minimum, the new collection designed by Victor Vasilev dedicated to the realm of the bathroom, unveiled by Falper at Fuorisalone 2021. Also presented for the first time live at the event: the Butler collection designed by Andrea Federici, the freestanding Fontana washbasin and the Cilindro accessories designed by Victor Vasilev.

OPEN SPACE

#S201



falper.

Foster+Partners

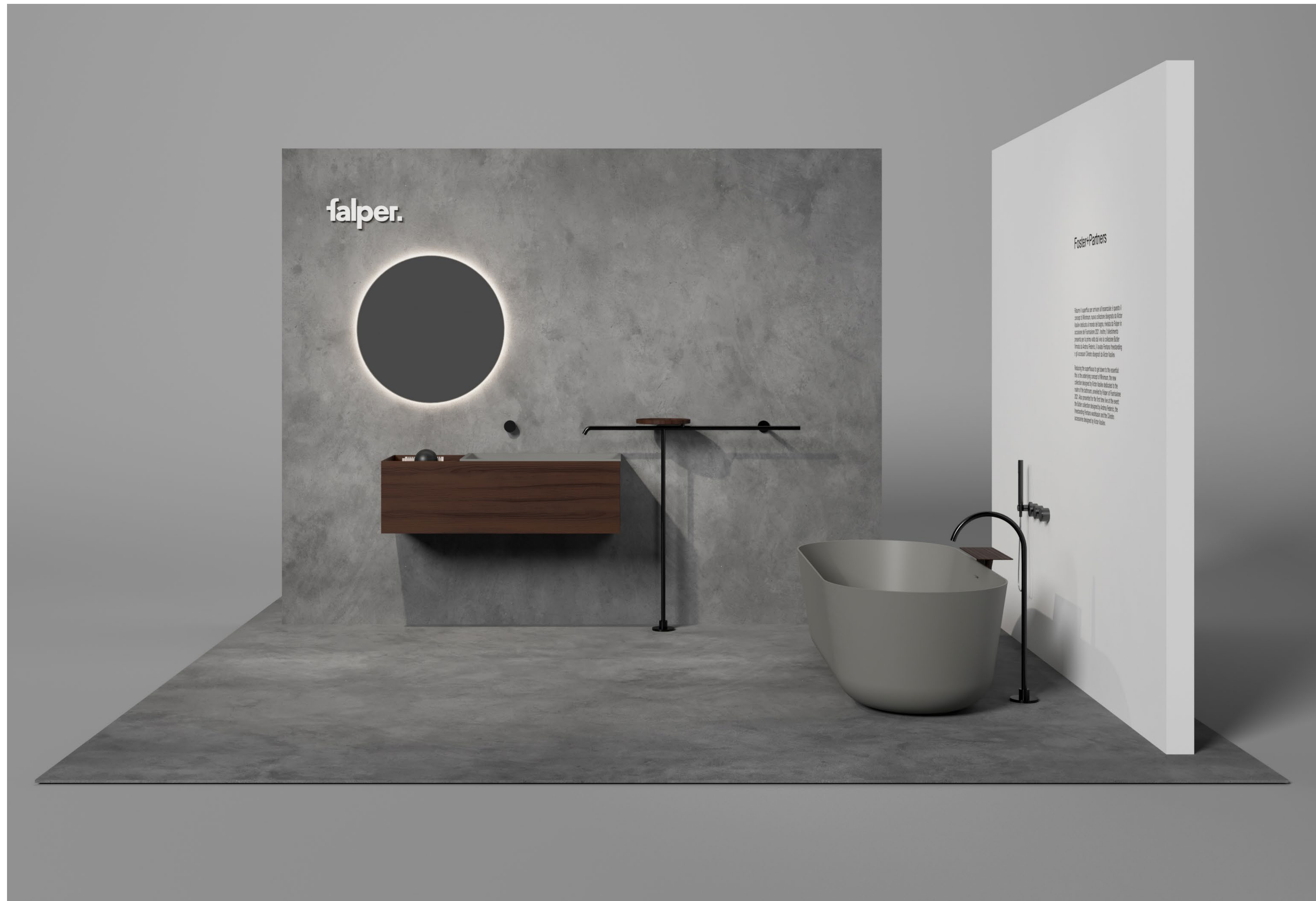
Ridurre il superfluo per arrivare all'essenziale: è questo il concept di Minimum, nuova collezione disegnata da Victor Vasilev dedicata al mondo del bagno, rivelata da Falper in occasione del Fuorisalone 2021. Inoltre, l'allestimento presenta per la prima volta dal vivo la collezione Butler firmata da Andrea Federici, il lavabo Fontana freestanding e gli accessori Cilindro disegnati da Victor Vasilev.

Reducing the superfluous to get down to the essential: this is the underlying concept of Minimum, the new collection designed by Victor Vasilev dedicated to the realm of the bathroom, unveiled by Falper at Fuorisalone 2021. Also presented for the first time live at the event: the Butler collection designed by Andrea Federici, the freestanding Fontana washbasin and the Cilindro accessories designed by Victor Vasilev.

OPEN SPACE

#S202





OPEN SPACE

#S203



OPEN SPACE

#S204

SETTING UP GUIDELINES

Finishes

White – White emulsion paint RAL 9003



Suggested finishes:
HD SURFACE - Perfect Combination, White 01
KERAKOLL - Wallpaper, KK1 Color Collection
OIKOS PAINT – Supermatt

Cement – Resin, plaster, or cement-effect painting



Suggested finishes:
HD SURFACE - Cement Wabi, Grey 112
KERAKOLL - Wallcrete, KK8 Color Collection
OIKOS PAINT - Textured Concrete, Industrial Texture, color CE 1002
CANDIS - Forma, colore Iron Grey 390

Boiserie – Covering in heat-treated Acacia wood



Custom-made and supplied by Falper.
To be installed according to the design specifications.

**We would be delighted to meet you in person
for a successful collaboration.**

Info:
marketing@falper.it

falper.